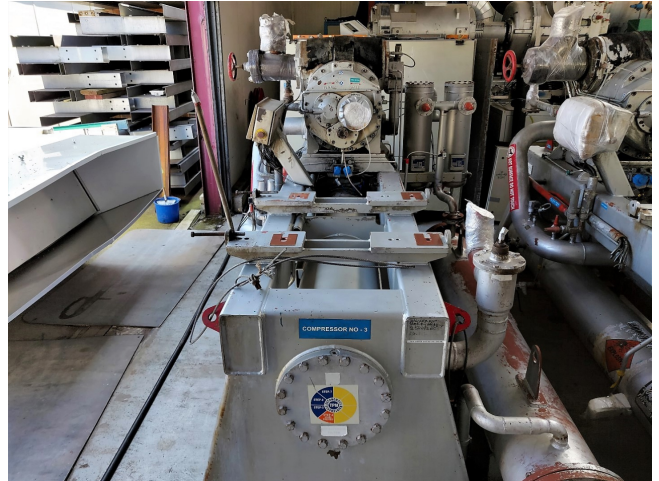


Sabroe SAB 202 LM package

Specifications

Hersteller	Sabroe
Typ	SAB 202 LM package
Kältemittel	NH 3 (ammonia)
kW at -20°C/+40°C	754,5
kW at -30°C/+40°C	478,8
kW at -40°C/+40°C	282,8
Anlaufentlastung	✓
Leistungsregelung	✓
Auf einem Stahlramen	✓
Druckschalter	✓
Ölabscheider	✓
Magnetventil	✓
Schaltschrank	✓
Bemerkungen	Serial nrs: 106329 / 106331 / 106332
Bemerkungen	*Capacity based on Electromotor 250 kW at 2950 RPM (not included)
Bemerkungen	Optional we have a large selection of electro-motors
Package / Rack	✓
Größe	4010x1900x2160 mm (LxWxH)
Stock	3



Description

Used Sabroe SAB 202 LM package

Used, JC maintained NH3 ammonia screw compressor package Johnson Controls Sabroe SAB 202 LM . This includes the following components: Steel frame, Marelli Motori MA 001 A4 (2,2 kW at 1420 RPM), Oil Separator OHU 4131, oil cooler and Unisab II control panel and other necessary components // Optional we have a large selection of electro-motors. // Optional we can perform overhaul and spray-paint.

